

GRADUATE OUTCOMES

BACHELOR OF SCIENCE IN INTERNATIONAL HOSPITALITY MANAGEMENT



DECEMBER 2022



Graduate Outcomes Analysis - Bachelor

The reporting on graduate outcomes for the Bachelor of Science in International Hospitality Management offered by the EHL Hospitality Business School (hereafter EHL) is prepared and updated for public disclosure purposes as defined by the New England Commission for Higher Education and the Council for Private Education.

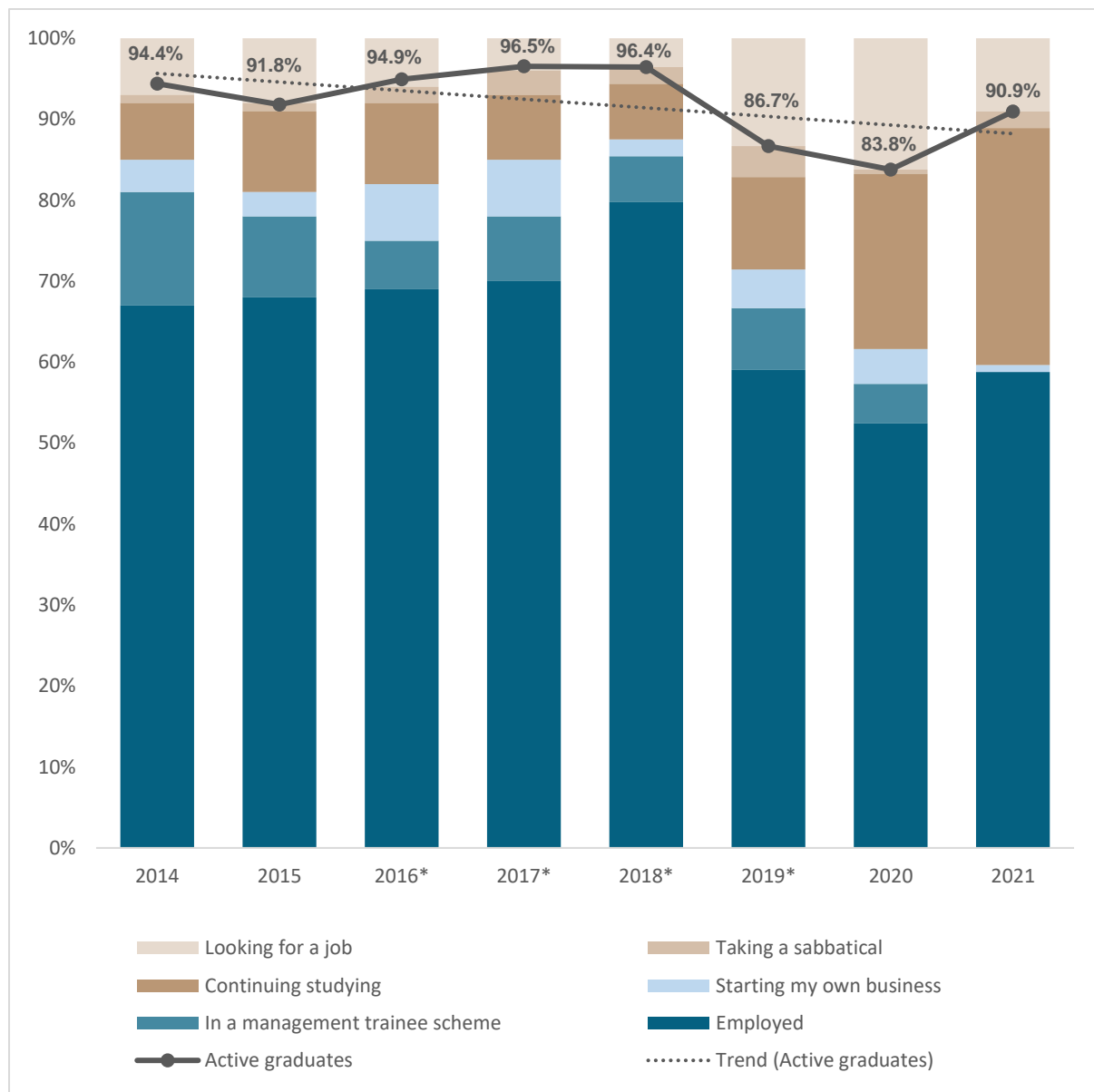
Data Source:

EHL: Graduate Surveys and Enterprise Data Management system – Academic Administration Data Pole

Graduate Employment Rate

This section provides data regarding the graduate employment rate and professional situation for EHL Bachelor graduates (Figure 1) as well as their sector of activity (Figure 2). The data presented in this section is extracted from the Graduate Survey. The employment rate is calculated as the percentage of respondents who indicated being employed, being in a management trainee scheme, starting their own business or continuing their studies.

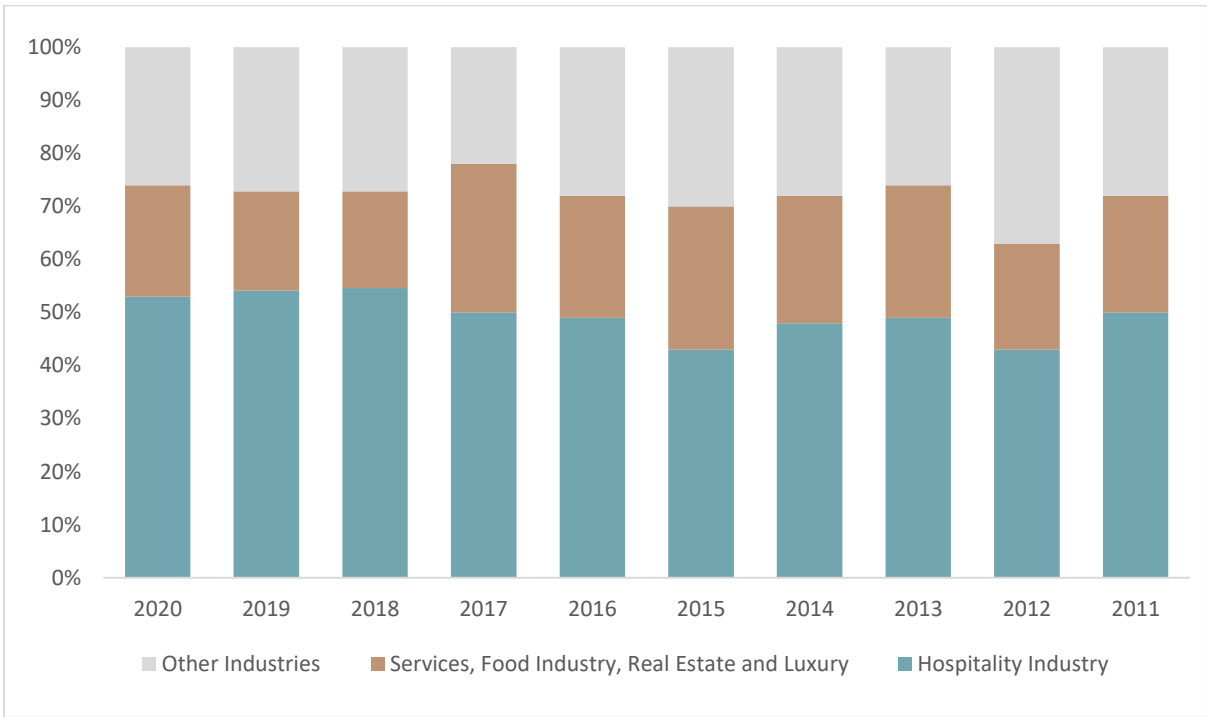
Figure 1. Graduate employment rate – postgraduation status



Note: For 2019, the Graduate Survey was undertaken with one cohort and represents a smaller sample size than in previous years. The survey responses were received between April and May 2020, in the beginning period of the Covid crisis when sanitary measures were applied. A follow up survey was undertaken (Graduate Survey + 24 months; new survey delivered for the first time in 2021) amongst the 2019 graduates which showed an employment rate of 93.9%.

** Survey done 6-month postgraduation due to a change in methodology.*

Figure 2. Sectors of activity of Bachelor alumni per graduation year - 2021



Evolution of the Professional Position Level of EHL Alumni

The analysis provided in this section is based on a sample of around 2,500 alumni, who graduated between 2011 and 2020, and for whom we hold detailed information regarding their employment situation in the EHL Alumni database. Figures 3, 4 and 5 show the evolution of the positions held by graduates over time e.g.:

- the data showed for “2011” corresponds to the professional position, as of 2021, of alumni who graduated in 2011, i.e. 10 years after graduation
- the data showed for “2020” corresponds to the professional position, as of 2021, of alumni who graduated in 2020, i.e. 1 year after graduation.

Figure 3. Level of responsibility of Bachelor Graduates per graduation year - 2021

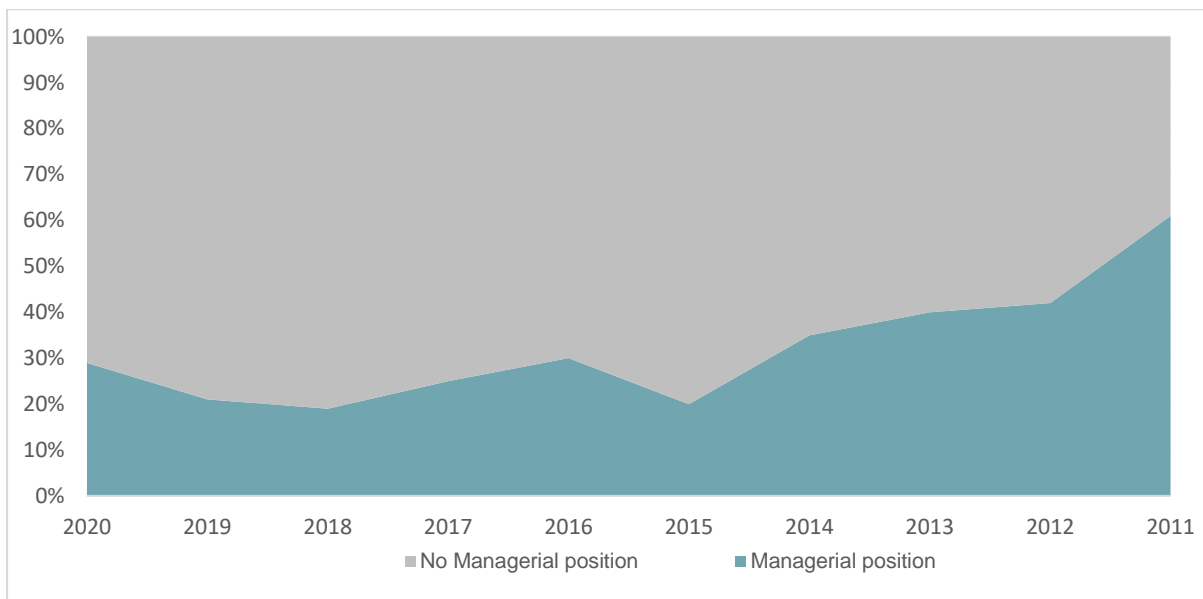


Figure 4. Evolution of the level of responsibility of Bachelor Graduates per graduation year - 2021

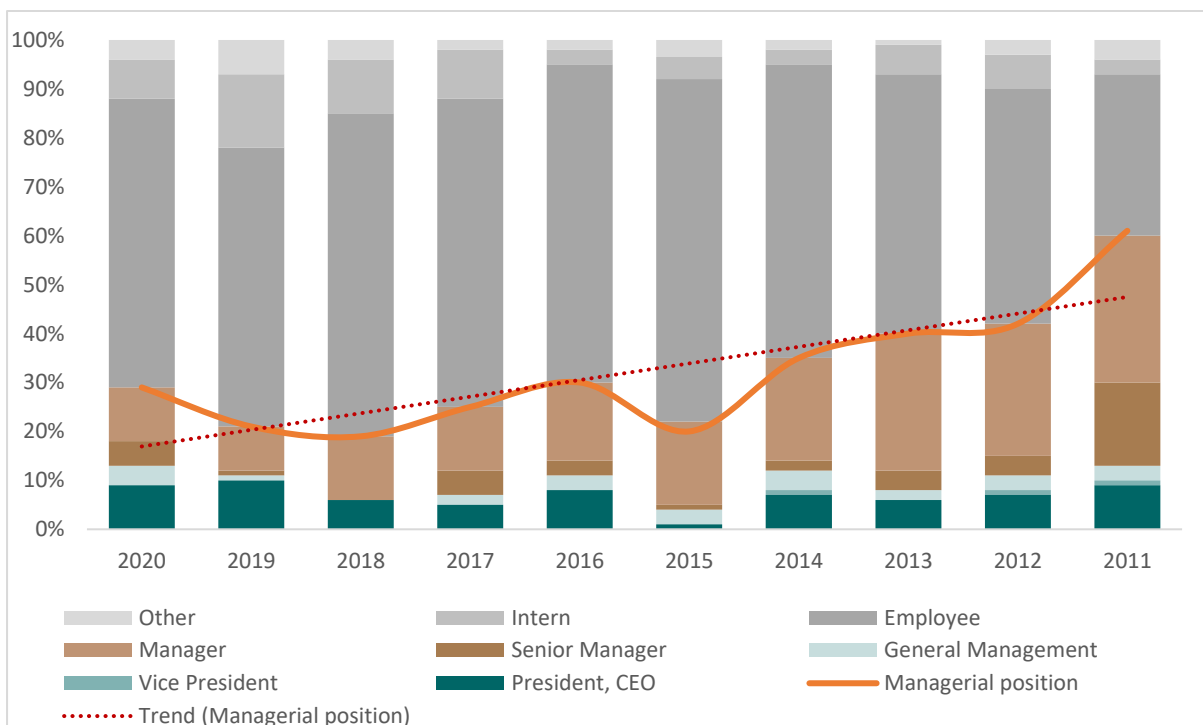


Figure 5. Evolution of the level of responsibility of Bachelor Graduates per gender – 2021

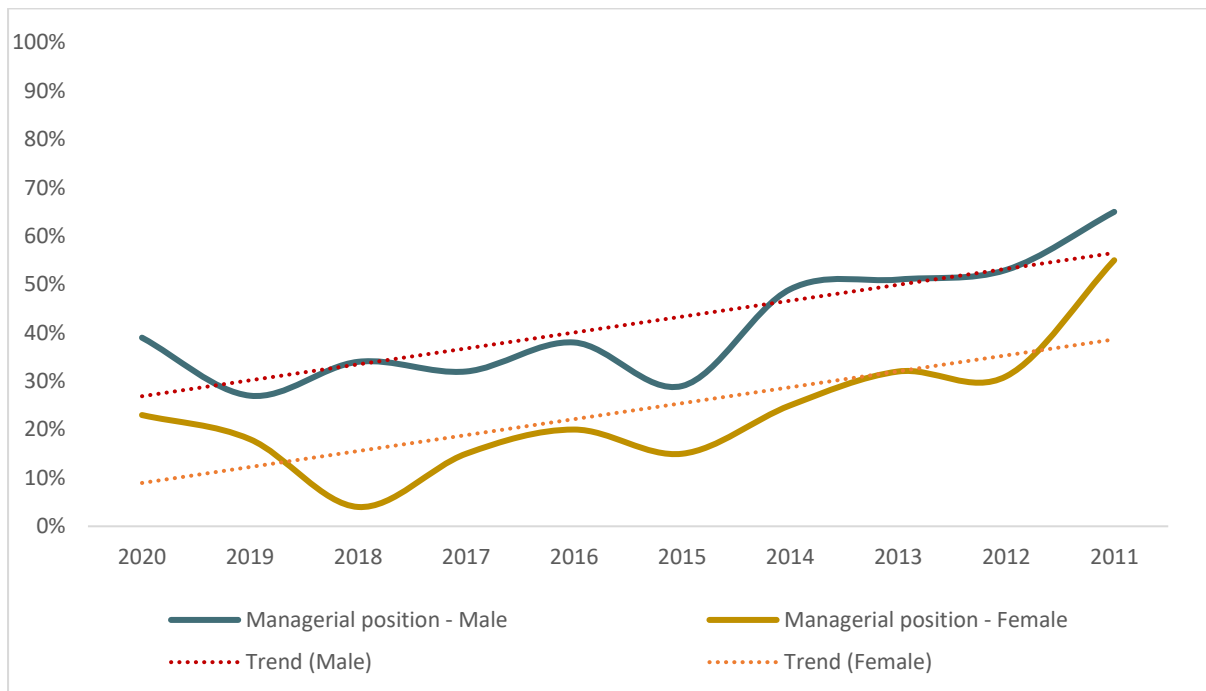


Figure 6. Top 10 countries of work per graduation year for alumni of the Bachelor program

