

# Nanyang Living

168 Ang Mo Kio Ave 8, Level 3



# LAYOUT

## Legend

**1:** Single Master Bedroom with Balcony

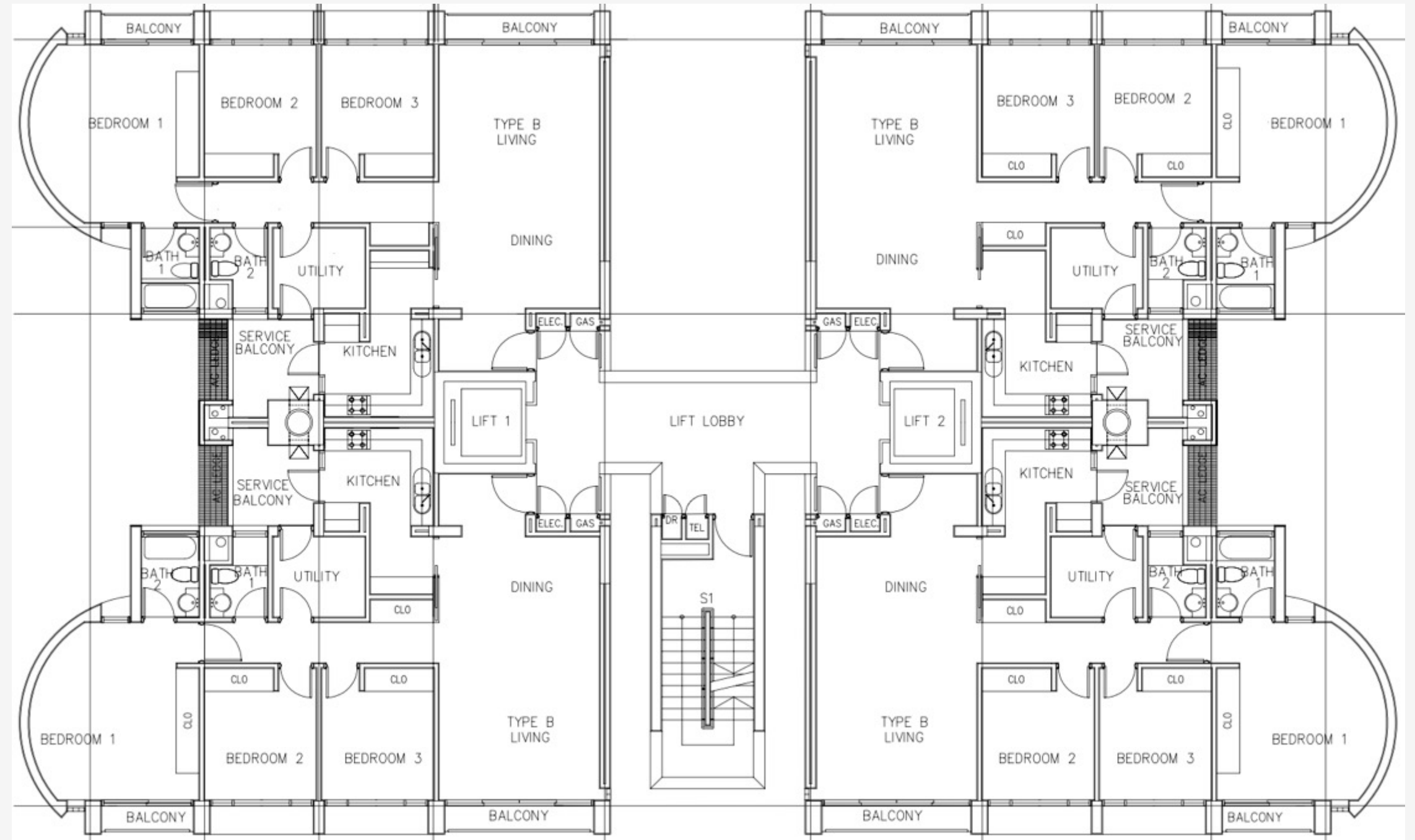
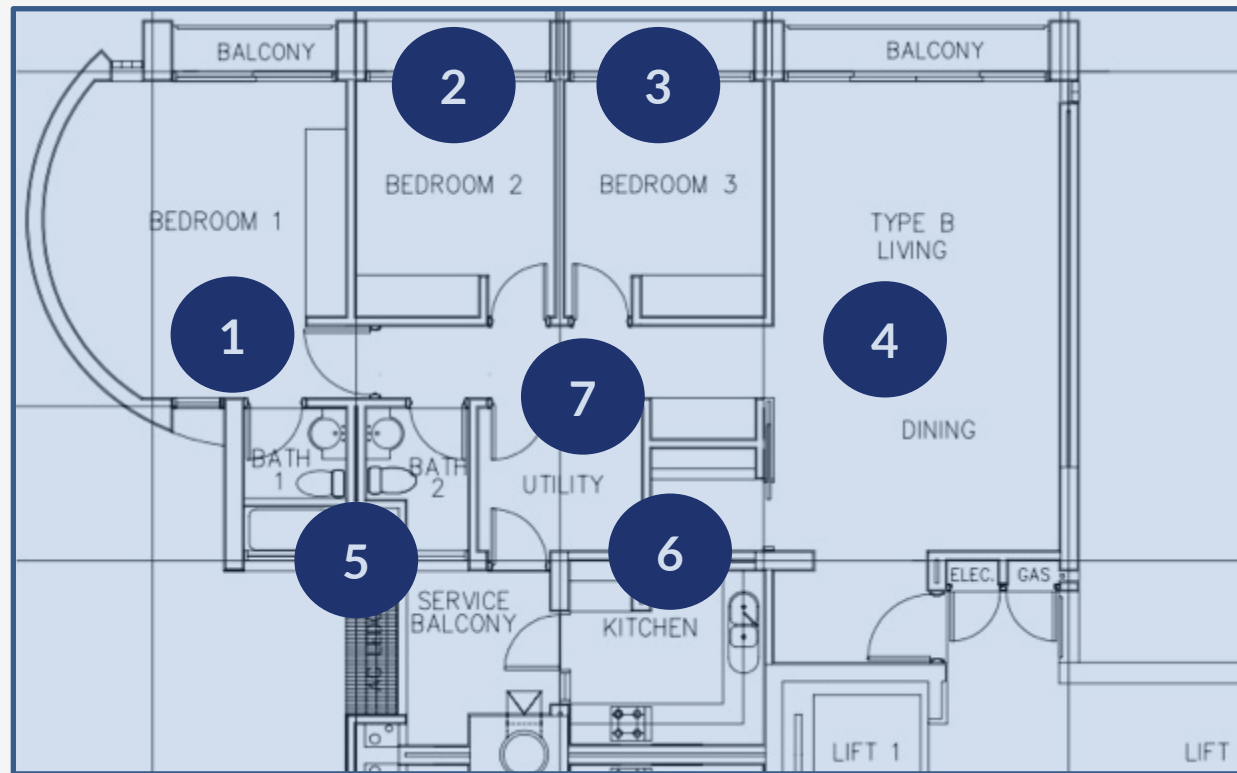
**2-3:** Standard Single Bedrooms

**4:** Living Room & Dining Rooms

**5:** WCs

**6:** Kitchen

**7:** Laundry Area



For illustration purposes only

# APARTMENTS



For illustration purposes only

# PROPERTY SPECS

## Spaces

- 3<sup>RD</sup> floor units
- Each 3 Bedroom Unit consists of:
  - 2 x standard single bedrooms
  - 1 x master bedroom with balcony
  - Living room with balcony
  - Dining room
  - Kitchen
  - 2 WC
  - Utility / Laundry Room

## Amenities & Utilities

- Unlimited high speed Wifi
- Cooking appliances & utensils (fridge, microwave, kettle crockery etc.)
- Television
- Air-conditioning (in bedrooms and living room)
- Washing Machine & Iron
- Each Bedroom comes with single bed, mattress
- Wall Cabinet
- Regular maintenance and servicing
- 24Hr Hot Water for Showering



# ROOM RENTAL

## Room Type

- Fully furnished single rooms
- Standard Singles (2 per unit)
- Deluxe Primary Room (Master, 1 per unit)

## For Enquiries & Bookings

Email: Josephine Lumbao ([josephine@theworkingcapitol.com](mailto:josephine@theworkingcapitol.com)) for enquiries and bookings.

Students are recommended to form their own groups if they would like to take the full apartment before writing collectively to Josephine. Students are encouraged to enquire asap if you are keen, as the spaces are limited and is on first come first served basis.

Note: If the options provided are not suitable then you should continue to explore alternatives on your own. Note that student pass application must be approved to sign the contract with most landlords in Singapore so should submit asap if you have not done so.



# 30 PENHAS ROAD

Level 2, 3, 4 & Rooftop



### Legend

## 10: Kitchen

13:Laundry area



# NEIGHBOURHOOD & DISTRICT

## What's good in Jalan Besar/Lavender?

The name "Jalan Besar" means 'big or wide road' in Malay. Once a mere dirt track through a betel nut and nipah plantation, it is now a conserved area full of stunning shophouses, vibrant street art and good food.

- Bustling neighbourhood with hip cafes, craft beer joints, local and western eateries
- Street art and beautiful shophouses
- Craft workshops
- Boutique hotels
- Home to top design and branding firms

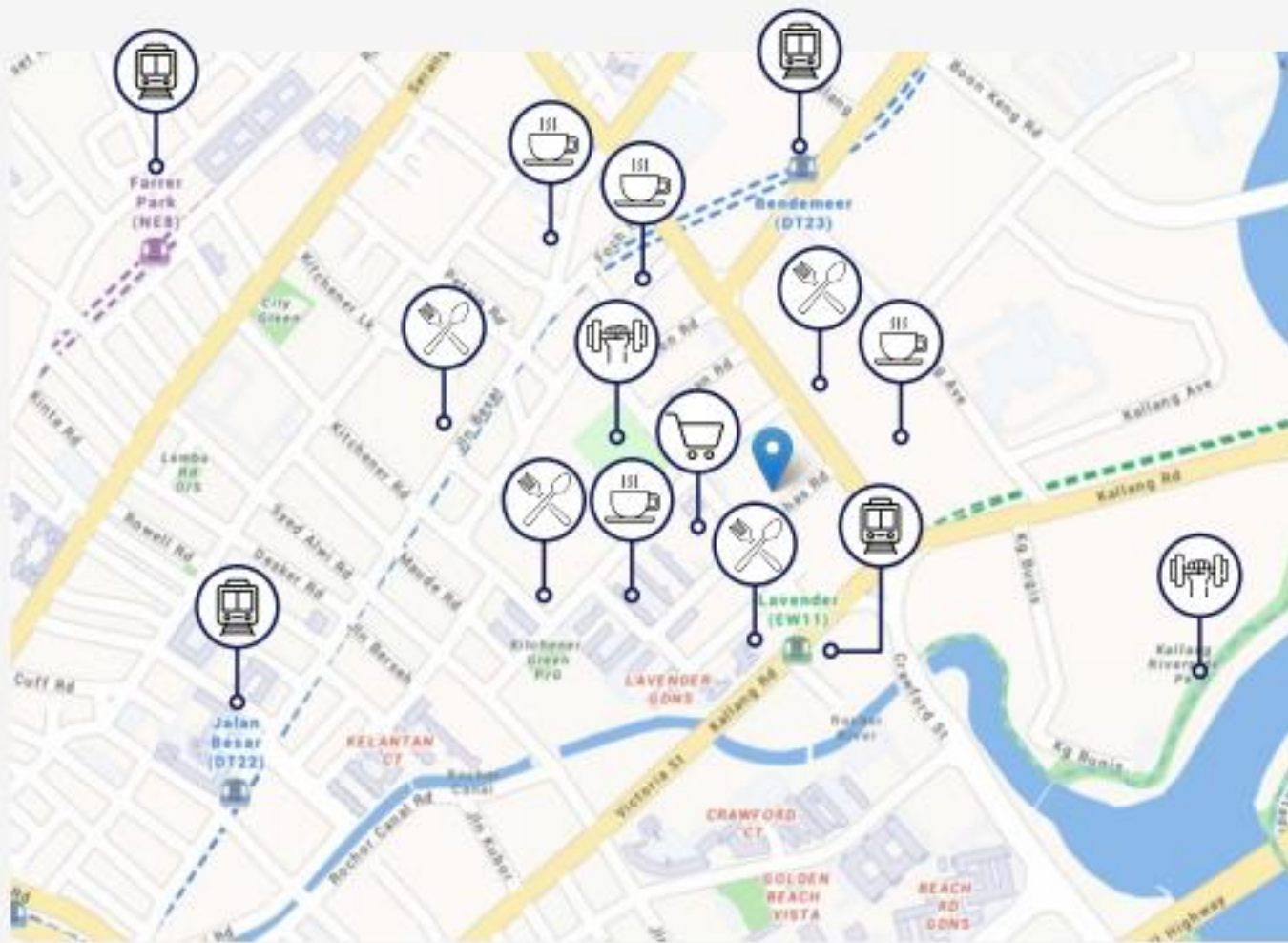




Room Types



# Common Areas



# PRIME LOCATION

## Transportation

- 280m from Lavender MRT, 3 minutes by foot
- 700m from Bendemeer MRT, 9 minutes by foot
- 160m to nearest bus stop, direct bus 67 to EHL campus

## Point of Interest

- 350m to Jalan Besar Sports Centre, 4 minutes by foot
- Haji Lane, Kampong Glam & Arab Street
- City Center (Raffles Place), 5 minutes by train
- Mustafa Centre

## 5 Minutes

- Cafes & bars
- Restaurants

## 10 Minutes

- Kallang Riverside Park
- City Square Mall, Bugis Junction
- National Library
- Museums

## Eat & Drink

- 160m to food court/ eateries
- 100m to Kitchener Complex and Aperia Mall, 1 minute by foot
- 100m to supermarket, 1 minute by foot

### **How to enquire?**

Email: Josephine Lumbao ([josephine@theworkingcapitol.com](mailto:josephine@theworkingcapitol.com)) for enquiries and bookings.

Students are recommended to form their own groups if they would like to take the full apartment before writing collectively to Josephine.

Students are encouraged to enquire asap if you are keen, as the spaces are limited and is on first come first served basis.

***Note: If the options provided are not suitable then you should continue to explore alternatives on your own. Note that student pass application must be approved to sign the contract with most landlords in Singapore so should submit asap if you have not done so.***